

Clarks

VILLAGE
OUTLET SHOPPING

STREET, SOMERSET



Clarks Village, Street, Somerset

The first outlet centre in the UK, winner of two BCSC Awards for Innovation and Best Established Centre. REALM has developed over 100,000 sq ft (9,300 sq m) of additional retail space, doubling the centre's total offer in the last five years.

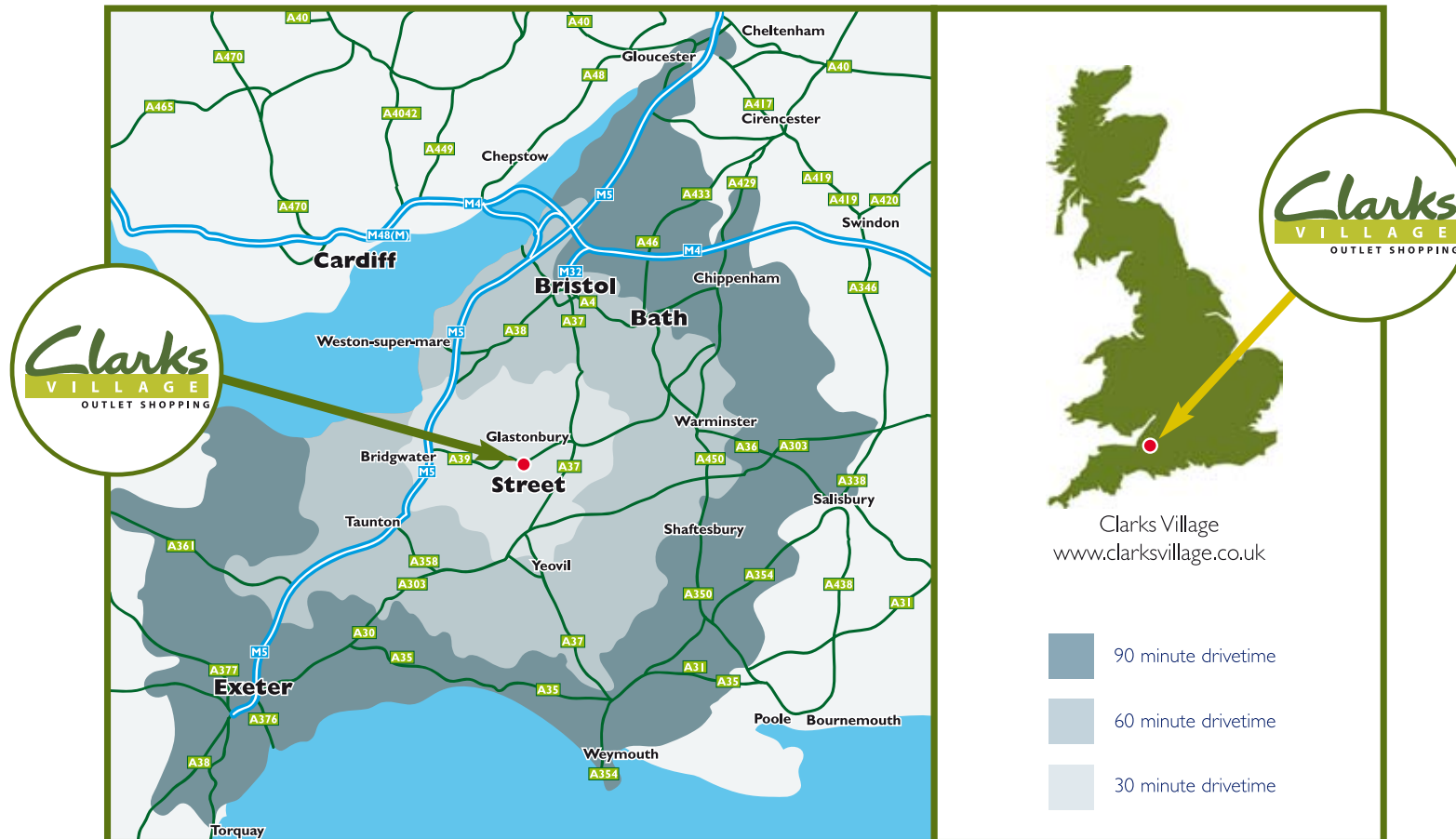
Client: Hermes Real Estate





Location & Demographics

- 3.5 million visitors per annum
- Excellent accessibility from the M5 and A303
- Close to major conurbations of Bristol, Bath and Exeter
- Located within Street town centre, close to Millfield School
- 22% of visitors are tourists
- No. 1 free visitor attraction in the West Country



Centre Information & Plan

- First outlet centre in the UK, opened in 1993 and recognised as one of the premier centres in Europe achieving consistently high sales levels
- 235,000 sq ft (21,830 sq m) of retail space (including the Crispin Centre)
- 110 stores
- 1,400 car parking spaces and 10 coach spaces
- Number one Clarks Factory Outlet Shop in the UK
- Key brands include: Clarks, Gap, Next, M&S, Fat Face, Jaeger, Coast, White Stuff, Monsoon, Sony, Denby, Timberland and Calvin Klein



